

## STRUCTURE OF THE HEART WORKSHEET

MAKE A CHART TO DESCRIBE THE STRUCTURE AND FUNCTION OF THE FOLLOWING TERMS

aorta  
atrium  
ventricle  
bicuspid valve  
cardiac vein  
coronary artery  
coronary sinus  
endocardium  
myocardium  
papillary muscle  
pericardial cavity  
pericardium  
pulmonary trunk  
tricuspid valve

ANSWER THE FOLLOWING QUESTIONS USING COMPLETE SENTENCES

1. Compare the structure of the tricuspid valve with that of the pulmonary semilunar valve.
2. Describe the general action of the valves in the heart.
3. Describe the function of the chordae tendineae and the papillary muscles.
4. What is the significance of the difference in thickness between the right and left ventricle?

LIST (in order) the major blood vessels, chambers, and valves through which a drop of blood must pass in traveling from a vena cava to the aorta.

Figure 36.1 Anterior view of the human heart.

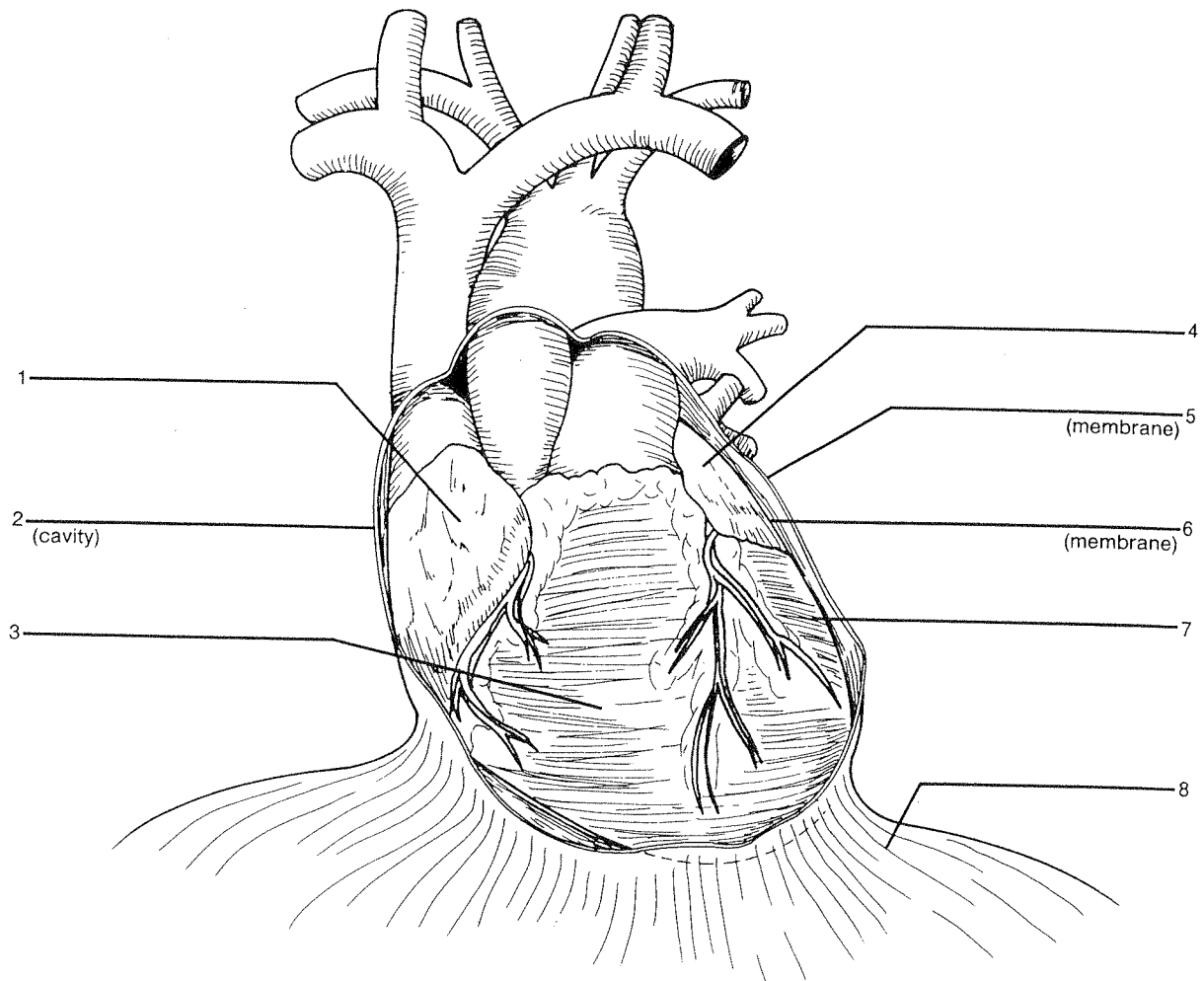


Figure 36.2 Frontal section of the human heart.

